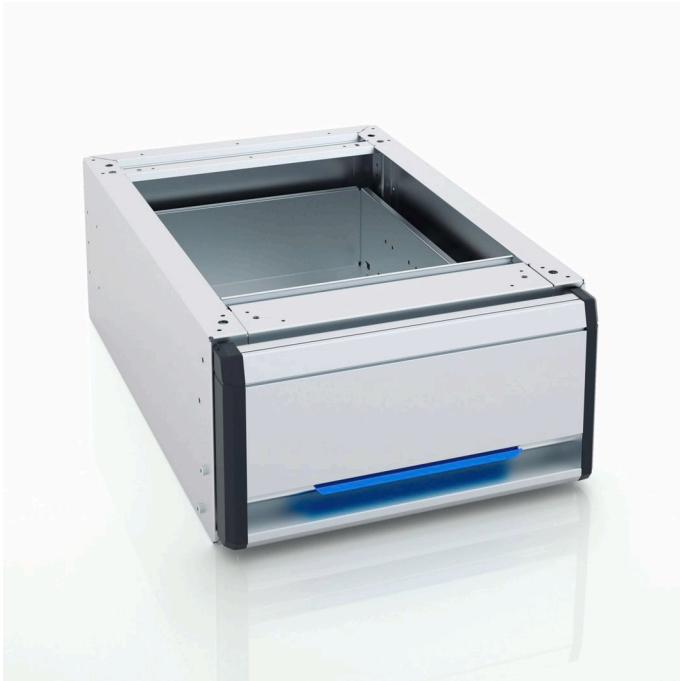


## Jumbo-Unit A 1.5-16-15 1xSBL14

Material no.: 1000024100 | Matchcode: JU A 1.5-16-15 1S | EAN code: 4014599044006



- » Anti-fingerprint coating for an easy-to-care-for finish
- » Lightweight and excellent load capacity
- » A surface load of up to 100 kg
- » Anti-fingerprint coating for an easy-care finish

### Materials & Colour

Material:	Aluminium
Colour:	Silver

### Dimensions

Grid width:	1,5
Grid depth:	16
Grid height:	15
Outer dimensions:	1,650.7 x 356.1 x 255 mm
Interior dimensions:	1,575 x 260 x 209.6 mm
Usable area:	0.410 m <sup>2</sup>


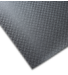

### Technical data

Weight:	22,23 kg
Maximum load capacity:	100 kg
Number of drawers:	1

**Jumbo-Unit A 1.5-16-15 1xSBL14**

Material no.: 1000024100 | Matchcode: JU A 1.5-16-15 1S | EAN code: 4014599044006

**Accessories**

	Material no.	Description	Matchcode	EAN code
	1000024535	Jumbo-Unit A 1.5-16-8 covering tray	JU A 1.5-16-8 ADW	4014599796868
	6000016582	Tools mat drawer JU A 1.5-16-0	WZM JU A 1.5-16-0	4014599198846
	1000024143	Jumbo-Unit A 1.5-16 Topper SGR PS	JU A 1.5-16 DP PS	4014599120748

We reserve the right to make changes in the interest of technical progress, as well as correcting printing errors and mistakes. Pictures are similar, decorative material not included. With the publication of this data sheet, previous editions lose their validity. Version: 08.09.2025