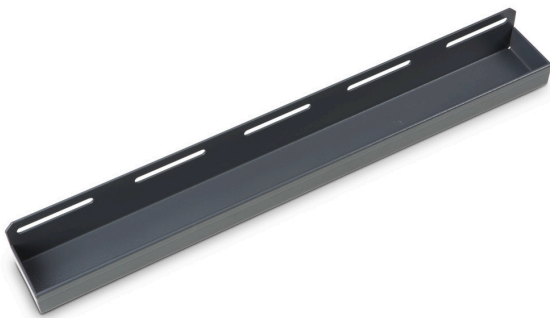


**wall fixation AluCaddy**

Material no.: 1000004391 | Matchcode: WH ZCAKL | EAN code: 4045294500443



- » for practical AluCaddy foldable
- » Alu Caddy is stowed away in a proper and secure manner
- » quick securing and removal

**Materials & Colour**

Material:	Steel
Colour:	Anthracite


**Dimensions**

Outer dimensions:	505 x 62 x 55 mm
-------------------	------------------

**Technical data**



Weight:	1,13 kg
Maximum load capacity:	6 kg

**Accessories**

	Material no.	Description	Matchcode	EAN code
	801014905	AluCaddy foldable	ZCAKL	4045294165253

**wall fixation AluCaddy**

Material no.: 1000004391 | Matchcode: WH ZCAKL | EAN code: 4045294500443

	Material no.	Description	Matchcode	EAN code
	6000001231	ProSafe individual lashing point	EZ PS	4045294224646
	1000002455	ProSafe bungee strap 1000 mm incl. 2 hooks	SGPS 1000	4045294243234

**Description**

The wall holder for the Alucaddy is a practical accessory with which you can stow away the AluCaddy both securely and correctly in your vehicle. It is inserted into the wall fixation in a folded up state. It is recommended for additional fixation of the upper part of the AluCaddy to install two ProSafe single lashing points (Ref. No. 6000001231), with combined fixation by means of the ProSafe bungee strap (Ref. No. 1000002455).

As a result, your AluCaddy (Ref. No. 801014905) is tidied away and secured during transit and serves as a practical helper for the transport of WorkMo modules, heavy BOXxes or bulky freight at your place of operation or in the workshop.

The mounting material is not included with delivery.

We reserve the right to make changes in the interest of technical progress, as well as correcting printing errors and mistakes. Pictures are similar, decorative material not included. With the publication of this data sheet, previous editions lose their validity. Version: 21.12.2023