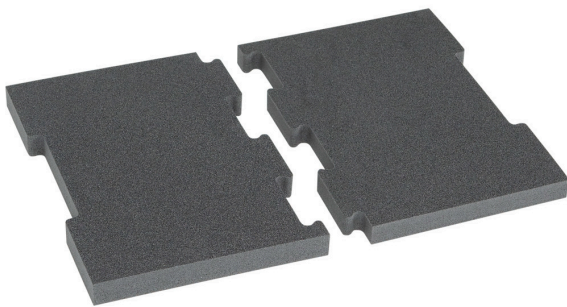


### incl. seat cushion top cover L-BOXX

Material no.: 121015436 | Matchcode: LB SPD | EAN code: 4045294169428



- » Fits the entire L-BOXX range
- » Transforms the L-BOXX into a comfortable seat
- » Quick and easy to assemble

#### Materials & Colour

Material:	PE Plastic
Colour:	Black

#### Dimensions

Outer dimensions:	328 x 225 x 24 mm
-------------------	-------------------

#### Technical data

Weight:	0,10 kg
---------	---------

#### Description

Transform every L-BOXX into a comfortable seat with the soft foam seat cushion. This two-piece seat cushion can be transported in the L-BOXX to save space – ensuring you always have a comfortable seat during your break on site. Stacking several L-BOXXes together creates different seating heights. The seat cushion is compatible with all L-BOXXes, the LS-BOXX 306 G and the lid of the i-BOXX Rack G.

Please note: The lid of the L-BOXX withstands a maximum load of 85 kg.

We reserve the right to make changes in the interest of technical progress, as well as correcting printing errors and mistakes. Pictures are similar, decorative material not included. With the publication of this data sheet, previous editions lose their validity. Version: 21.12.2023