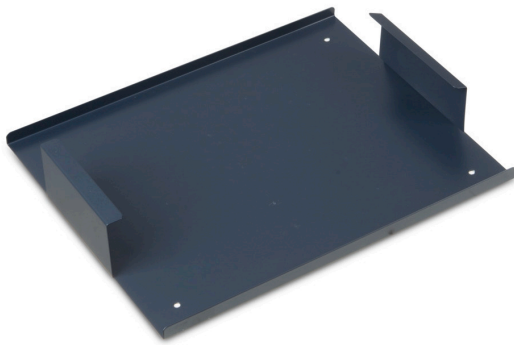


Insetboxes insert L-BOXX H63 G

Material no.: 1000011089 | Matchcode: LB IBE G | EAN code: 4045294731946



- » fits the L-BOXX 238 G and 374 G in conjunction with a divider set
- » perfect for inset box height of 63 mm
- » partition base creates a division into two levels
- » optimises the storage space inside your BOXX

Materials & Colour

Material: Steel
Colour: Sortimo CoolGrey


Dimensions

Outer dimensions: 380 x 312 x 64 mm

Technical data



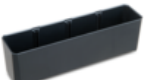

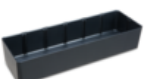
Weight: 0,70 kg

Accessories

| | Material no. | Description | Matchcode | EAN code |
|-------------------------------------------------------------------------------------|--------------|------------------|------------|---------------|
|  | 6000010903 | Insetbox 1x1 H63 | IB 1X1 H63 | 4045294730154 |

Insetboxes insert L-BOXX H63 G

Material no.: 1000011089 | Matchcode: LB IBE G | EAN code: 4045294731946

| | Material no. | Description | Matchcode | EAN code |
|-------------------------------------------------------------------------------------|--------------|------------------|------------|---------------|
|  | 6000010904 | Insetbox 1x2 H63 | IB 1X2 H63 | 4045294730161 |
|  | 6000010905 | Insetbox 2x2 H63 | IB 2X2 H63 | 4045294730178 |
|  | 6000010906 | Insetbox 1x4 H63 | IB 1X4 H63 | 4045294730185 |
|  | 6000010907 | Insetbox 2x3 H63 | IB 2X3 H63 | 4045294730192 |
|  | 6000010908 | Insetbox 2x6 H63 | IB 2X6 H63 | 4045294730208 |

Description

The L-BOXX H63 G partition base creates even more order and maximum use of the BOXX's volume. Inserting one into an L-BOXX 238 G or L-BOXX 374 G creates a partition layer on which inset boxes can be arranged.

The prerequisite for this is that the L-BOXX has a divider frame at the bottom, which acts as a support for the partition base. The insert can be completely individually fitted with inset boxes with a height of 63 mm. Please note that an inset box U3 H63 G is needed on both the right and left. The entire insert, as well as individual inset boxes, can be removed from the L-BOXX at any given time. The L-BOXX thus becomes a combined small component and transport system.

Tip: Fit our rigid foam lid insert to the lid of the L-BOXX. When it closes, it seals the top of the inset boxes, preventing the contents from becoming mixed up.

We reserve the right to make changes in the interest of technical progress, as well as correcting printing errors and mistakes. Pictures are similar, decorative material not included. With the publication of this data sheet, previous editions lose their validity. Version: 21.12.2023