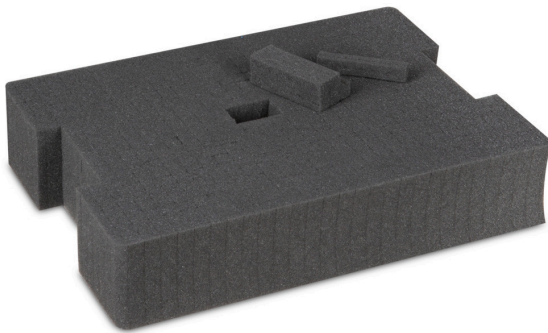


Foam insert L-BOXX 136 G4

Material no.: 1000011118 | Matchcode: LB RS 136 G4 | EAN code: 4045294733322



- » perforated foam insert for the L-BOXX 136 G4
- » side-by-side arrangement of foam blocks (15 x 15 mm)
- » individually adaptable
- » protects sensitive materials and machinery
- » increases the service life of expensive machines

Materials & Colour

Material:	PU
Colour:	Anthracite

Dimensions

Outer dimensions:	315 x 424 x 95 mm
-------------------	-------------------

Technical data



Weight:	0,28 kg
---------	---------

Accessories

	Material no.	Description	Matchcode	EAN code
	1000011324	Lid insert EPP L-BOXX G4	LB DE G4	4045294737597

Foam insert L-BOXX 136 G4

Material no.: 1000011118 | Matchcode: LB RS 136 G4 | EAN code: 4045294733322

	Material no.	Description	Matchcode	EAN code
	1000011120	Tool card 1 L-BOXX G4	LB WK1 G4	4045294733346
	1000011322	Tool card 2 L-BOXX G4 3-sided	LB WK2 G4	4045294737580
	1000011130	Document card L-BOXX G4	LB DK G4	4045294733438

Description

The foam insert fits the L-BOXX 136 G4 and provides for the secure transport of valuable spare parts or samples. The pre-perforated material provides for the highest possible protection during transport and is easily adapted to your workpiece or sensitive machinery by cutting out individual foam segments (15 x 15 mm). You can now help to enhance the service life of your valuable equipment. Combine the foam insert with a rigid foam lid insert for additional protection of the contents of your BOXX.

We reserve the right to make changes in the interest of technical progress, as well as correcting printing errors and mistakes. Pictures are similar, decorative material not included. With the publication of this data sheet, previous editions lose their validity. Version: 21.12.2023