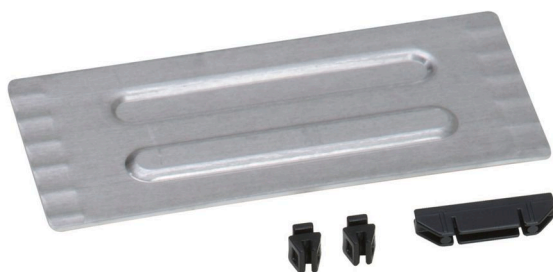


slot divider 145x62 for metal case WM 320/321

Material no.: 5267603 | Matchcode: TB WM 320/145 | EAN code: 4014599267603



- » Divider for metal case KM 320 and 321
- » Enables individual sub-division in the depth
- » Simple assembly
- » Simplified working through one-handed operation
- » Individually adaptable interior

Materials & Colour

Material(s):	Steel, Aluminium
Color:	Silver

Dimensions

External dimensions:	145 x 66 x 2 mm
----------------------	-----------------

Technical details

Weight:	0,05 kg
---------	---------

Structure & Function

slot divider 145x62 for metal case WM 320/321

Material no.: 5267603 | Matchcode: TB WM 320/145 | EAN code: 4014599267603

Description

The slot divider 145x62 mm serves to sub-divide the metal case WM 320 and 321 across the width.

With this divider you can sub-divide your metal case 320 in the depth in combination with a slot divider 309x62 mm (Ref. No. 5267641) - the slot divider in this case also sub-divides across the width. To this end you simply insert the supplied plastic adapter in the desired position in the recesses of the slot divider and subsequently insert the divider.

The metal case 321 comes equipped with two slot dividers meaning the divider 145x62 mm only needs to be positioned in the required spot via the supplied plastic adaptors in order to create further subdivisions in the depth. The compartments provide for order and overview ability within the metal cases WM .

Further information can be found here:



We reserve the right to make changes in the interest of technical progress, as well as correcting printing errors and mistakes. Pictures are similar, decorative material not included. With the publication of this data sheet, previous editions lose their validity. Version: 03.03.2026