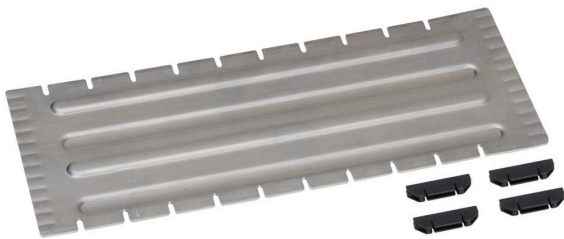


slot divider 309x127 for metal case WM 340/341

Material no.: 5267849 | Matchcode: TB WM 340/309 | EAN code: 4014599267849



- » slot divider for metal case WM 340/341
- » enables individual sub-division across the width.
- » simple mounting
- » Simplified working through one-handed operation
- » individually adaptable interior

Materials & Colour

Material:	Steel Aluminium
Colour:	Silver

Dimensions

Outer dimensions:	309 x 127 x 2 mm
-------------------	------------------

Technical data

Weight:	0,17 kg
---------	---------

Design & Function



slot divider 309x127 for metal case WM 340/341

Material no.: 5267849 | Matchcode: TB WM 340/309 | EAN code: 4014599267849

Description

The slot divider 309x127 mm serves to sub-divide the metal case WM 340 and 341 across the width. The slot divider can be simply deployed in the included serial production guide rail on the inside of the metal case WM. The slot divider has recesses in which you can insert plastic adapters for dividers 154x127 mm (Ref. No. 5267801). In combination with the dividers you achieve an additional division in the depth. The metal case WM 341 comes equipped with two slot dividers 309x127. It goes without saying that you can further sub-divide across the width with extra slot dividers. The compartments provide for organisation and clear arrangement within the metal cases WM 340 and 341.

We reserve the right to make changes in the interest of technical progress, as well as correcting printing errors and mistakes. Pictures are similar, decorative material not included. With the publication of this data sheet, previous editions lose their validity. Version: 29.02.2024