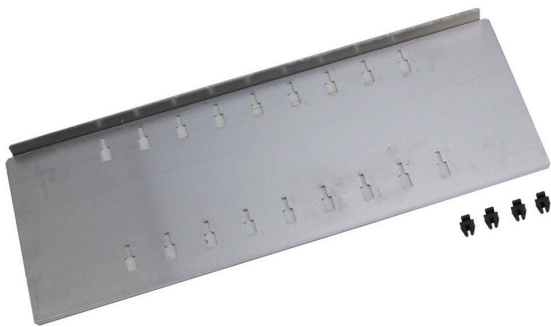


## Slot divider 354x130 mm for the L-BOXX 238 G

Material no.: 121017247 | Matchcode: LB 238 STB 354X130 | EAN code: 4045294182366



- » Fits L-BOXXes 238 G with divider frame
- » Subdivides the depth of the L-BOXX
- » Provides an improved overview of work materials

### Materials & Colour

Material:	Aluminium PP Plastic
Colour:	Silver

### Dimensions

Outer dimensions:	354 x 130 x 20 mm
-------------------	-------------------

### Technical data

Weight:	0,21 kg
---------	---------





### Design & Function



## Slot divider 354x130 mm for the L-BOXX 238 G

Material no.: 121017247 | Matchcode: LB 238 STB 354X130 | EAN code: 4045294182366

### Accessories

	Material no.	Description	Matchcode	EAN code
	121017612	Divider frame for the L-BOXX 238 G / 374 G	LB 238 / 374 TBR	4045294185091
	121017246	Slot divider 283x130 mm for the L-BOXX 238 G	LB 238 STB 283X130	4045294182359
	121017249	Divider 173x130 mm for the L-BOXX 238 G	LB 238 TB 173X130	4045294182380
	121017248	Divider 137x130 mm for the L-BOXX 238 G	LB 238 TB 137X130	4045294182373

### Description

The slot divider 354x130 mm, used in conjunction with a divider frame, divides the depth of the L-BOXX 238 G. This simply involves inserting the plastic adapters supplied into any slots in the divider frame and then re-inserting the slot divider.

The slot divider also has slots to create additional width subdivisions when the slot divider is positioned centrally with the dividers 137x130 mm.

The resulting compartments create more order within the L-BOXX and a structured working day.

We reserve the right to make changes in the interest of technical progress, as well as correcting printing errors and mistakes. Pictures are similar, decorative material not included. With the publication of this data sheet, previous editions lose their validity. Version: 21.12.2023